

Environmentally - Friendly Forklift Trucks



Quick parts supply



Easy maintenance



Global network

CERES SYSTEM

CERES(Construction Equipment Resource Support) is HHI's new information system on all Hyundai construction equipment for our overseas dealers and branch offices.

<http://ceres.hhi.co.kr>



HLF 15/18-5

※ Optional items :

- Cabin & Heater
- Side shift
- Electronic Beacon
- Hazard Switch
- Emergency Warning
- Tire
 - Solid single
 - No-marking single
- Seat
 - Seat Belt
 - Arm Rest
 - Hip Restraint
- MCV : 4 Spools
- Master Switch
- Rear Work Lamp
- Hose - reel
- License Lamp
- Fork
 - 1050,1200,1350,1500 mm
- Over Shoes
 - 1300,1500,1700 mm
- Various Attachments
 - Side shift, Hinged fork, Hinged bucket,
 - Rotating fork, Carton lamp, Pallet invert,
 - Load extender, Fork positioner, Push pull,
 - Rotating roll clamp, Load stabilizer, Bale clamp
 - Drum clamp

※ Hyundai is continuously upgrading and improving its products. It therefore reserves the right to supply products, which may differ slightly from description and illustration in this catalog. For further information on options, consult with Hyundai's dealer. Specifications are subject to change without notice.

HYUNDAI
HEAVY INDUSTRIES CO.,LTD.
CONSTRUCTION EQUIPMENT DIVISION

HEAD OFFICE 1 CHEONHA - DONG, DONG-KU, ULSAN, KOREA
(Sales Office) TEL : (82)52/230-7970, 7729 FAX:(82)52/230-7979, 7720
U.S. Operation Hyundai Construction Equipment U.S.A., Inc.
955 ESTES AVENUE ELK GROVE VILLAGE IL. 60007
TEL : (1)847 - 437 - 3333 FAX : (1)847 - 437 - 3574
European Operation Hyundai Construction Equipment Europe N.V.
VOSSENDAAL 11, 2440 GEEL, BELGIUM
TEL : (32)14 - 562200 FAX : (32)14 - 593405 - 06

PLEASE CONTACT

www.hyundai-ce.com

2004. 08 Rev 0.

Building a better future
Global Leader

www.hyundai-ce.com

NEW HLF 15/18-5 Pneumatic tire

- 1,500kg (3,000 lb)
- 1,750kg (3,500 lb)

Tier II Engine



■ Photo may include optional equipment.

HYUNDAI
HEAVY INDUSTRIES CO.,LTD.



The HLF 5 Series

Designed with a durable frame and built to offer excellent stability and a smooth ride, HLF 5 Series trucks are real workhorses.

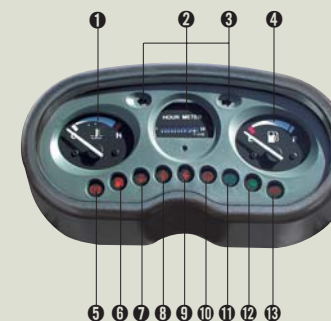
From external or internal loading and unloading of trucks and containers to yard work for the construction industry, whatever requirement arise, you can count on HLF 5 Series truck to lift your business to greater heights.



Superior Power & High Performance

Smooth running, efficient and ergonomically designed, HLF15/18-5 series are made to meet your needs.

Concentrated instrument panel

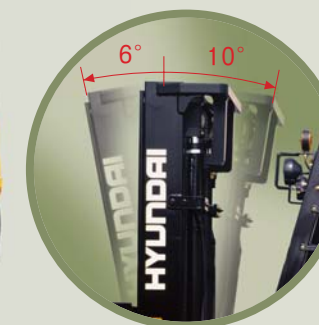


- | | |
|---------------------------|---|
| ① Water temperature gauge | ⑩ Transmission oil temperature warning lamp |
| ② Hour meter | ⑪ Battery charging warning lamp |
| ③ Directional indicators | ⑫ Air cleaner filter warning light |
| ④ Fuel gauge | ⑬ Head light indicator |
| ⑤ Parking lamp(Optional) | ⑭ Working light indicator |
| ⑥ Fuel warning lamp | ⑮ Pre-heater indicator |
| ⑦ Engine oil warning lamp | |



Clean and reliable brakes

The adoption of DUO-SERVO automotive type drum brake improves braking performance. A self - adjusting function maintains proper brake adjustment to compensate for lining wear.



Increased mast tilting angle

Utilizing the mast tilting angle of 6 degrees forward and 10 degrees backward, the operator can rapidly perform loading and unloading jobs safely.



Faster travel speed & gradeability

The powerful high-output engine provides greater acceleration, better gradeability and faster travel speed on any tough terrain or slope.

Travel speed (MAX)

HLF15-5 **20.6** km/h (12.8 mph)
HLF18-5 **20.6** km/h (12.8 mph)



Gradeability (MAX)

HLF15-5 **31%**
HLF18-5 **27.7%**

The new style HLF15/18-5

economical / serviceable

+

safety / environmentally-friendly

=

Top Brand of the World

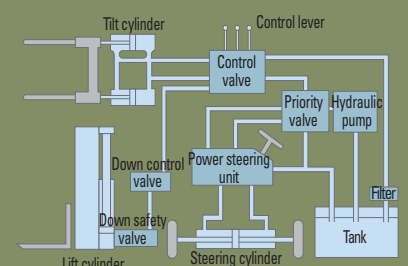
Fork safety features

When the forks are being lowered, a down-control valve maintains a controlled speed. The down-safety valve prevents forks from dropping down in case of sudden damage of hydraulic line. Both features contribute to safe operation.



State-of-the-art hydraulic system

The latest large-capacity hydraulic system reacts quickly during operation, and a low noise control valve increases both efficiency and durability.



Mitsubishi 4G63 ENGINE

39 ps/ 2,300 rpm

High Efficient Engine

The powerful, proven Mitsubishi 4G63 engine guarantees superior performance.

The 4G63 engine is a 2.0 liter, overhead cam engine producing 39 hp.

It is UL certified, and features an IMPCO LPG system and an electronic ignition.

This engine is EPA Tier II & CARB(California Air Resources Board) compliant.



Perfect fit

An ergonomically designed operator's compartment enables the driver to select the most comfortable working position for increased productivity.

Comfortable Operation

A design based on human engineering relieves fatigue and enhances operating performance.



Prompt response of operating control levers

Only minimal operator's effort is required for precise, safe and productive control.



Multi-functional switch

Integrated multi-functional switch lever enable the driver to operate lights and horn conveniently.



Parking brake

Ratchet type parking brake requires less efforts from the operator to set.



Adjustable steering wheel

Steering wheel can be adjusted by a lever on the right-hand side for the most comfortable operator position.



Easily adjustable full suspension seat

An attractive and adjustable seat, based on a human engineering design, provides great comfort, safety and durability.



Strong overhead guard

The safety overhead guard meets EEC and ANSI regulations and protects the operator during hazardous work.



Cup holder & console box

Additional storage spaces are located inside the operating space for operator's convenience.



Anti restart system

The new system protects the starter from restarting during engine operation.



Optimum pedal position

Based on human engineering, the accelerator, brake and inching pedals are optimally positioned for convenience while operating the equipment.

Easy on/off access

Low integral steps on both sides of the truck and a contoured, rubber-coated grip ensure easy access to the operator's seat.



New high visibility for safe operation

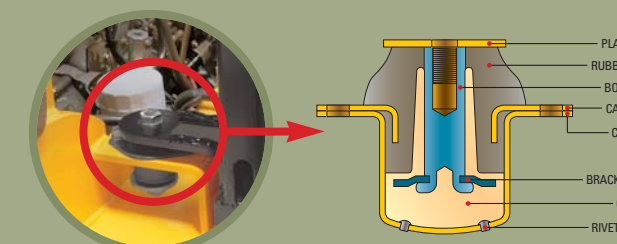
The operator is able to work with increased safety and accuracy due to a wider view mast.

HSC Hydraulic Suspension Cab

The latest anti-vibration and shock absorbing system

The state-of-the-art hydraulic suspension cab system, with integral anti-vibration rubber, is installed between the head guard and engine mount to reduce the source of vibration and noise while driving.

This not only reduces operator's fatigue but also increases safety.





High Durability & Easy Maintenance

An ideal arrangement of component parts ensures easy access and convenience for maintenance.



Master switch (option)

A master switch, which completely turns equipment on and off, prevents accidents, which might be caused by unauthorized use of the equipment.



Smooth steering

Installation of the port in the steering line makes it possible to measure and adjust the steering pressure.



Large footboard

Wide "open" step offers convenience and safety when entering and exiting truck.



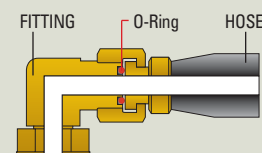
Rear safety lamp

Rear combination lamps with directional indicators, rear lights and brake lights are positioned for a high level of safety.

Highly durable electric shift - power transmission



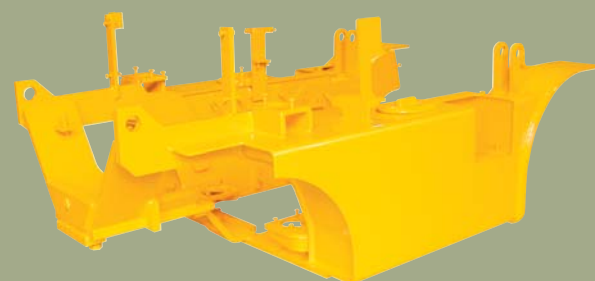
Powershift transmission provides for excellent operation and quick cycle times under rated operating conditions.



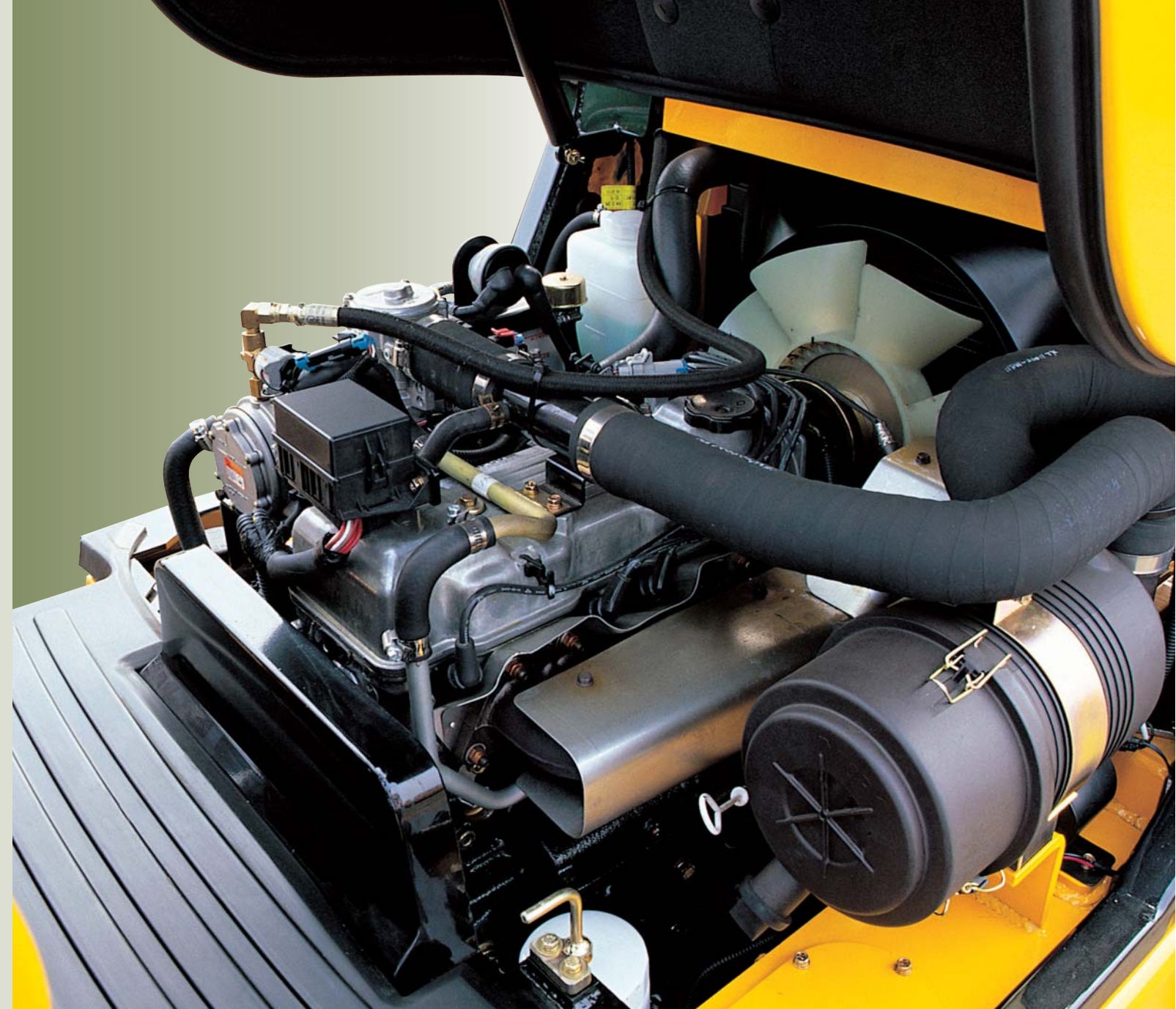
ORFS (O-Ring Face Seal)

ORFS type hose prevents the leaking of hydraulic oil.

Heavy duty single unit frame

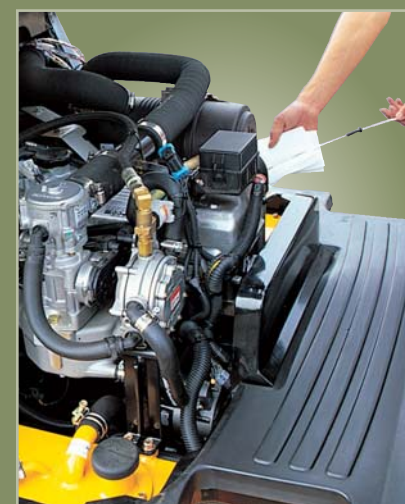


Heavy duty single unit type frame, designed on the basis of accurate structural analysis, guarantees durability and safety.

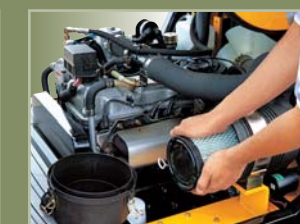


Engine hood for easy access

Full opening engine hood with self-locking gas spring enables easy access for repair and maintenance. Easy starter and air cleaner access.



Easy air cleaner filter exchange



Coolant auxiliary tank



A concentrated fuse box for easy inspection



Easy-to-change radiator



Extra-wide headlight and rear safety lamp

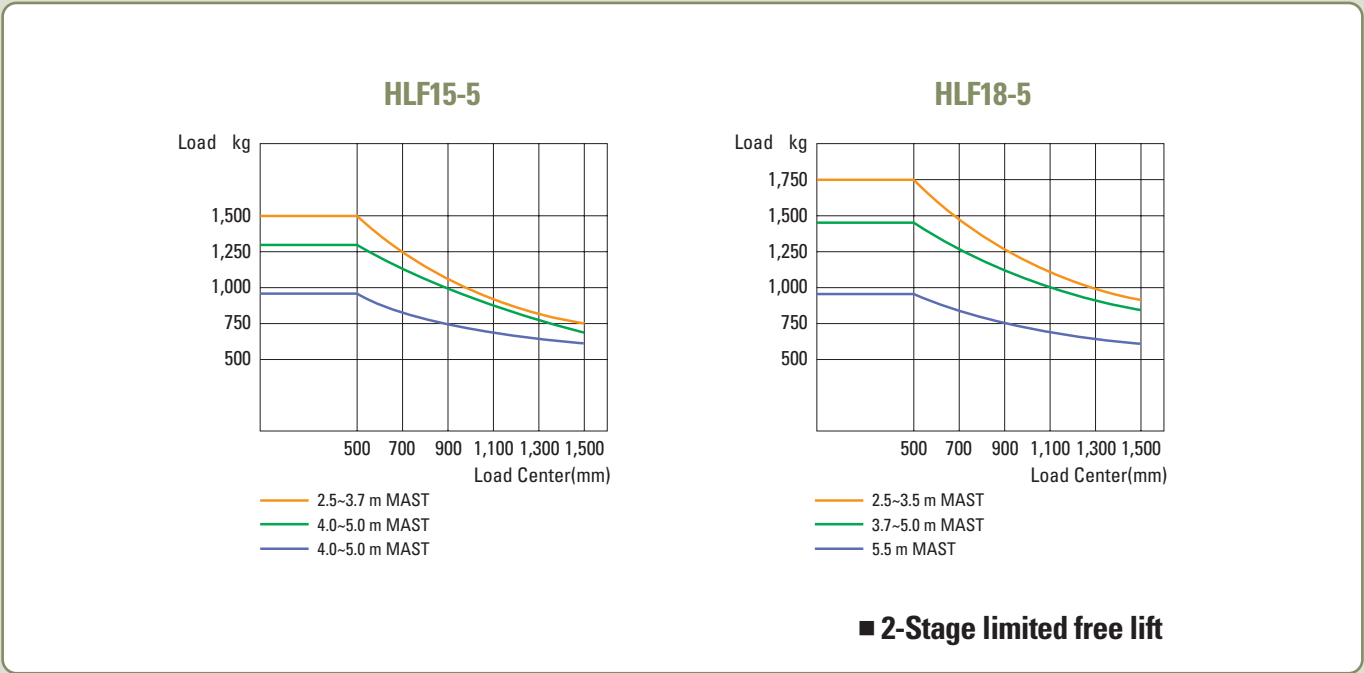


Maintenance free battery

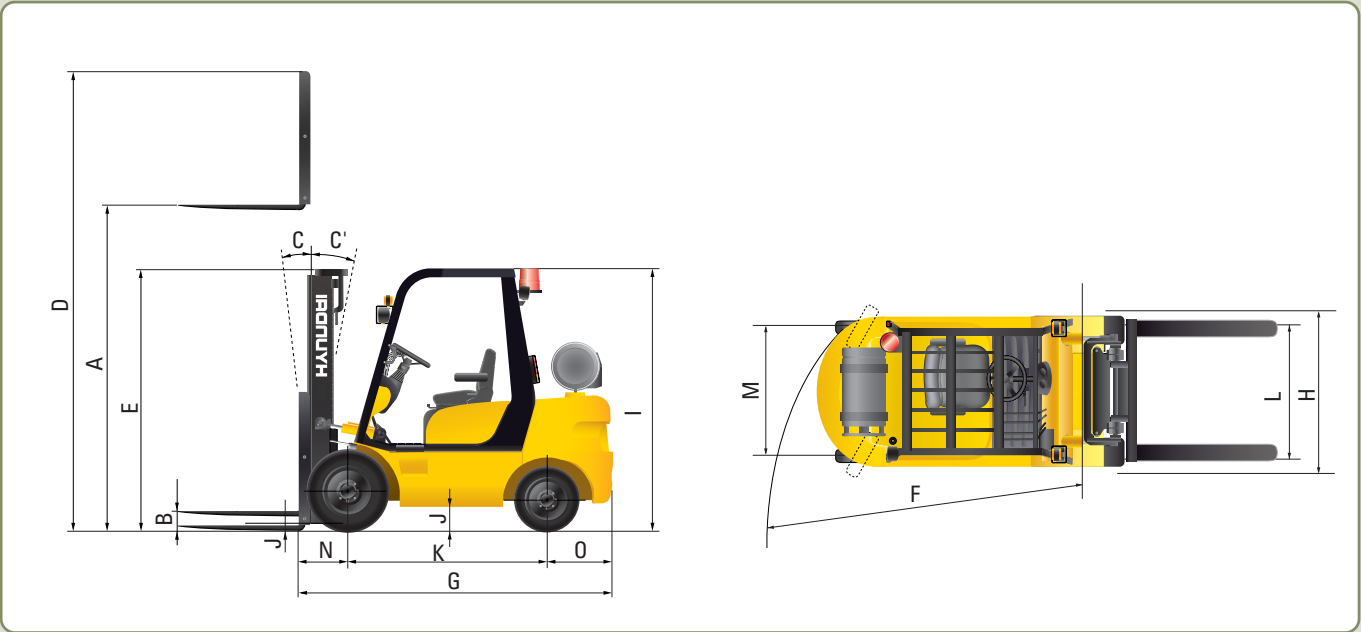
Mast Specification

TYPE MAST	Maximum Fork Height	Overall Height(mm)			Free Lift(mm)		Tilt Angle		Load Capacity at 500 mm(24 in)LC		Truck weight unloaded	
		Lowered	Extended		W/o Load Backrest	W/Std Load Backrest			HLF15-5	HLF18-5	HLF15-5	HLF18-5
			W/o Load Backrest	W/Std Load Backrest			Fwd	Bwd				
			mm(in)	mm(in)			mm(in)	mm(in)				
v250	2500 (98.4)	1755 (69.1)	3031 (119.3)	3532 (139.0)	145 (5.7)	145 (5.7)	6	10	1500 (3000)	1750 (3500)	2715 (5986)	2895 (6383)
v270	2700 (106.3)	1855 (73.0)	3231 (127.2)	3732 (146.9)	145 (5.7)	145 (5.7)	6	10	1500 (3000)	1750 (3500)	2728 (6015)	2908 (6411)
V300	3000 (118.1)	2005 (78.9)	3531 (139.0)	4032 (158.7)	145 (5.7)	145 (5.7)	6	10	1500 (3000)	1750 (3500)	2748 (6058)	2928 (6455)
V330	3300 (129.9)	2155 (84.8)	3831 (150.8)	4332 (170.5)	145 (5.7)	145 (5.7)	6	10	1500 (3000)	1750 (3500)	2767 (6101)	2947 (6497)
V350	3500 (137.8)	2255 (88.7)	4031 (158.7)	4532 (178.4)	145 (5.7)	145 (5.7)	6	10	1500 (3000)	1750 (3500)	2780 (6129)	2960 (6526)
V370	3700 (145.7)	2355 (92.7)	4231 (166.6)	4732 (186.3)	145 (5.7)	145 (5.7)	6	10	1500 (3000)	1700 (3450)	2793 (6158)	2973 (6555)
V400	4000 (157.4)	2505 (98.6)	4531 (178.4)	5032 (198.1)	145 (5.7)	145 (5.7)	6	10	1450 (2900)	1650 (3400)	2819 (6215)	2999 (6612)
V450	4500 (177.2)	2855 (112.4)	5031 (198.1)	5532 (217.8)	145 (5.7)	145 (5.7)	6	6	1375 (2800)	1575 (3250)	2882 (6354)	3062 (6751)
V500	5000 (196.9)	3105 (122.2)	5531 (217.7)	6032 (237.5)	145 (5.7)	145 (5.7)	6	6	1300 (2700)	1450 (3100)	2915 (6427)	3095 (6824)
V550	5500 (216.5)	3355 (132.1)	6031 (237.4)	6532 (257.2)	145 (5.7)	145 (5.7)	6	6	925 (2000)	950 (2000)	2952 (6509)	3132 (6906)
TF370	3700 (145.7)	1805 (71.1)	4276 (168.3)	4742 (186.7)	1299 (51.1)	798 (31.4)	6	6	1450 (3000)	1650 (3300)	2864 (6313)	3044 (6710)
TF400	4000 (157.4)	1905 (75.0)	4576 (180.1)	5042 (198.5)	1399 (55.1)	898 (35.3)	6	6	1400 (2850)	1600 (3300)	2882 (6353)	3062 (6750)
TF430	4300 (169.3)	2005 (78.9)	4876 (191.9)	5342 (210.3)	1499 (59.0)	998 (39.3)	6	6	1350 (2800)	1550 (3200)	2900 (6393)	3080 (6790)
TF450	4500 (177.2)	2105 (82.8)	5076 (199.8)	5542 (218.2)	1599 (62.9)	1098 (43.2)	6	6	1325 (2750)	1500 (3150)	2918 (6432)	3098 (6829)
TF470	4700 (185.0)	2155 (84.8)	5276 (207.7)	5742 (226.0)	1649 (64.9)	1148 (45.2)	6	6	1300 (2700)	1450 (3050)	2928 (6456)	3108 (6853)
TF500	5000 (196.9)	2255 (88.7)	5576 (219.5)	6042 (237.9)	1749 (68.8)	1248 (49.1)	6	6	1250 (2650)	1400 (3000)	2947 (6497)	3127 (6894)
TF550	5500 (216.5)	2455 (96.6)	6076 (239.2)	6542 (257.5)	1949 (76.7)	1448 (57.0)	6	6	950 (2000)	1100 (2300)	2983 (6576)	3163 (6972)
TF600	6000 (236.2)	2655 (104.5)	6576 (258.9)	7042 (277.2)	2149 (84.6)	1648 (64.9)	6	6	725 (1550)	750 (1600)	3044 (6710)	3224 (7107)
TF650	6500 (255.9)	2855 (112.4)	7076 (278.6)	7542 (296.9)	2349 (92.5)	1848 (72.7)	3	3	450 (950)	500 (1050)	3085 (6801)	3265 (7198)
TF700	7000 (275.6)	3055 (120.3)	7576 (298.2)	8042 (316.6)	2549 (100.3)	2048 (80.6)	3	3	225 (450)	250 (500)	3120 (6879)	3300 (7276)

Load Capacity



Dimension



Specification

Description				Unit	HLF15-5	HLF18-5
PERFORMANCE	Load Capacity			kg (lb)	1500(3000)	1,750(3,500)
	Load Center			mm (in)	500(24)	500(24)
	Fork	Lifting Speed	Load	mm/sec(fpm)	580(114.2)	570(112.2)
			Unload	mm/sec(fpm)	700(137.8)	700(137.8)
		Lowering Speed	Load	mm/sec(fpm)	500(98.4)	500(98.4)
			Unload	mm/sec(fpm)	450(88.6)	450(88.6)
		L x W x T			mm (in)	900x100x35(35.4x3.9x1.4)
	Body	Travel Speed(Unloaded)		km/hr (mph)	20.6(12.8)	20.6(12.8)
		Gradeability		%(deg)	31(17.2)	27.7(15.5)
		90° Intersection		mm (in)	1,890(74.4)	1,920(75.6)
		90° Staking		mm (in)	2,325(91.5)	2,355(92.7)
Weight(Unloaded)			kg(lb)	2,767(6,100)	2,947(6,497)	
A	Max. Lifting Height		mm (in)	3,300(130)	3,300(130)	
B	Free Lifting Height		mm (in)	145(5.7)	145(5.7)	
C	Tilting (Forward)		deg	6	6	
C'	Tilting (Backward)		deg	10	10	
D	Max. Height		mm (in)	4,332(170.6)	4,332(170.6)	
E	Min. Height		mm (in)	2,155(84.8)	2,155(84.8)	
F	Outside Turning Radius Min.		mm (in)	1,940(76.4)	1,970(77.6)	
G	Overall Length to fork face		mm (in)	2,170(85.4)	2,200(86.6)	
H	Overall Width		mm (in)	1,090(42.9)	1,090(42.9)	
I	Overhead Guard Height		mm (in)	2,110(83)	2,110(83)	
J	Ground Clearance	At the lowest point	mm (in)	120(4.7)	120(4.7)	
		Center of wheel base	mm (in)	145(5.7)	145(5.7)	
K	Wheel Base		mm (in)	1,360(53.5)	1,360(53.5)	
L	Wheel Tread - Front	Single	mm (in)	912(35.9)	912(35.9)	
M	Wheel Tread - Rear		mm (in)	912(35.9)	912(35.9)	
N	Overhang-front		mm (in)	385(15.1)	385(15.1)	
O	Overhang-rear		mm (in)	423(16.6)	453(17.8)	
ENGINE	Model			-	MITSUBISHI 4G63-32HL	MITSUBISHI 4G63-32HL
	Rated rpm			ps/rpm(kW/rpm)	39(28.7)/2,300	39(28.7)/2,300
	Max. Engine Torque			kgf·m/rpm(lbf·ft/rpm)	13.7(99)/1,500	13.7(99)/1,500
	Displacement			cc(cu-in)	1,997(122)	1,997(122)
TIRE	Front - Drive			-	6.50-10-12PR	6.50-10-12PR
	Rear - Load			-	5.00-8-8PR	5.00-8-8PR